

SURVEYOR'S OFFICE
Hamilton County

Kenton C. Ward, CFM
Surveyor of Hamilton County
Phone (317) 776-8495
Fax (317) 776-9628

Suite 188
One Hamilton County Square
Noblesville, Indiana 46060-2230

Map Correction-Field Verification

Drain Number: #264

Drain Length: 16,712

Drain Name: Cheswick & Sec. 1 Arm

Change +/-: - 275

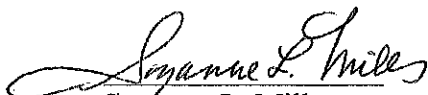
Date: 3-7-2011

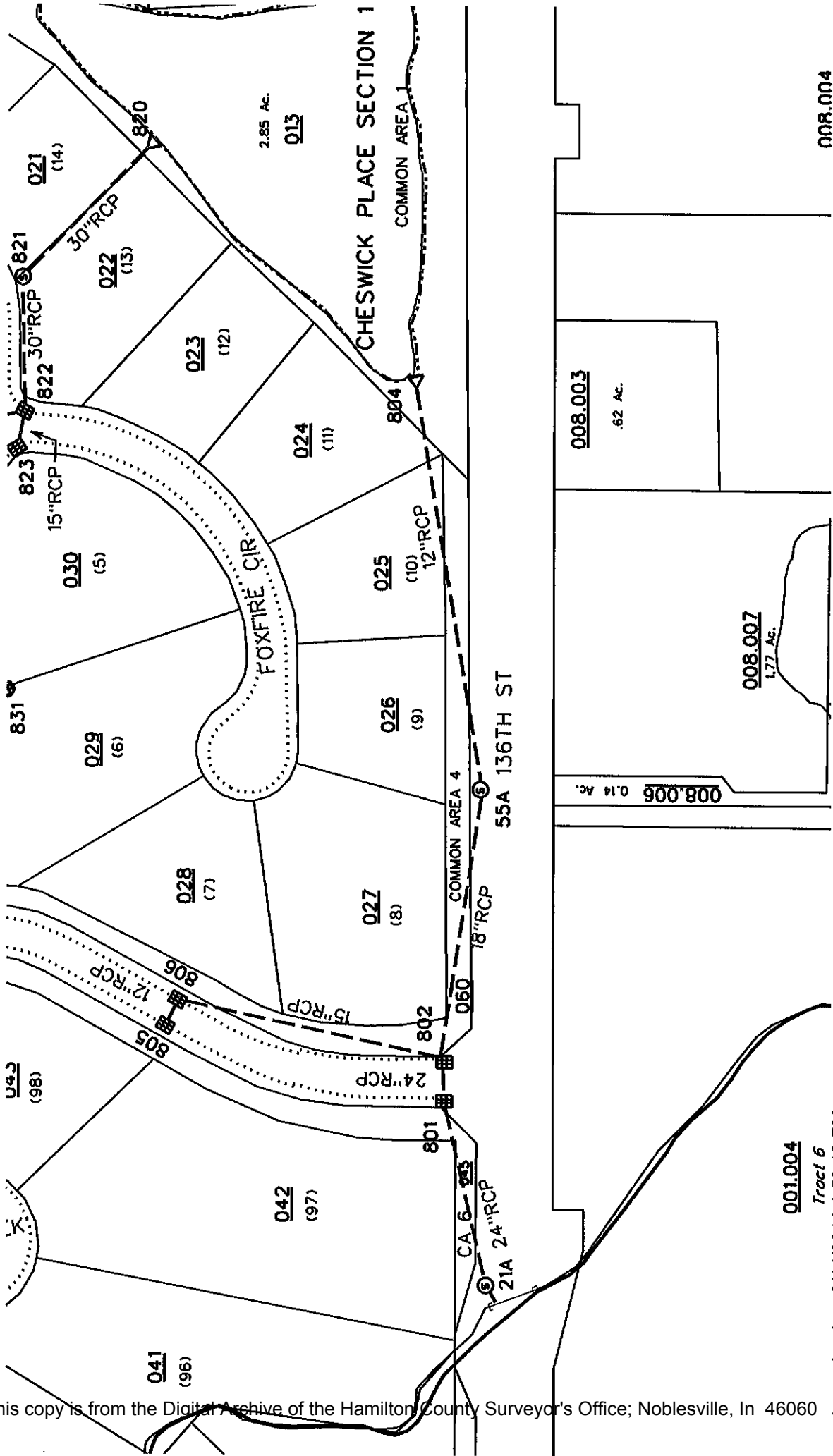
New Length: 16,437

Verified By: SLM, LMC

Notes & Sketch:

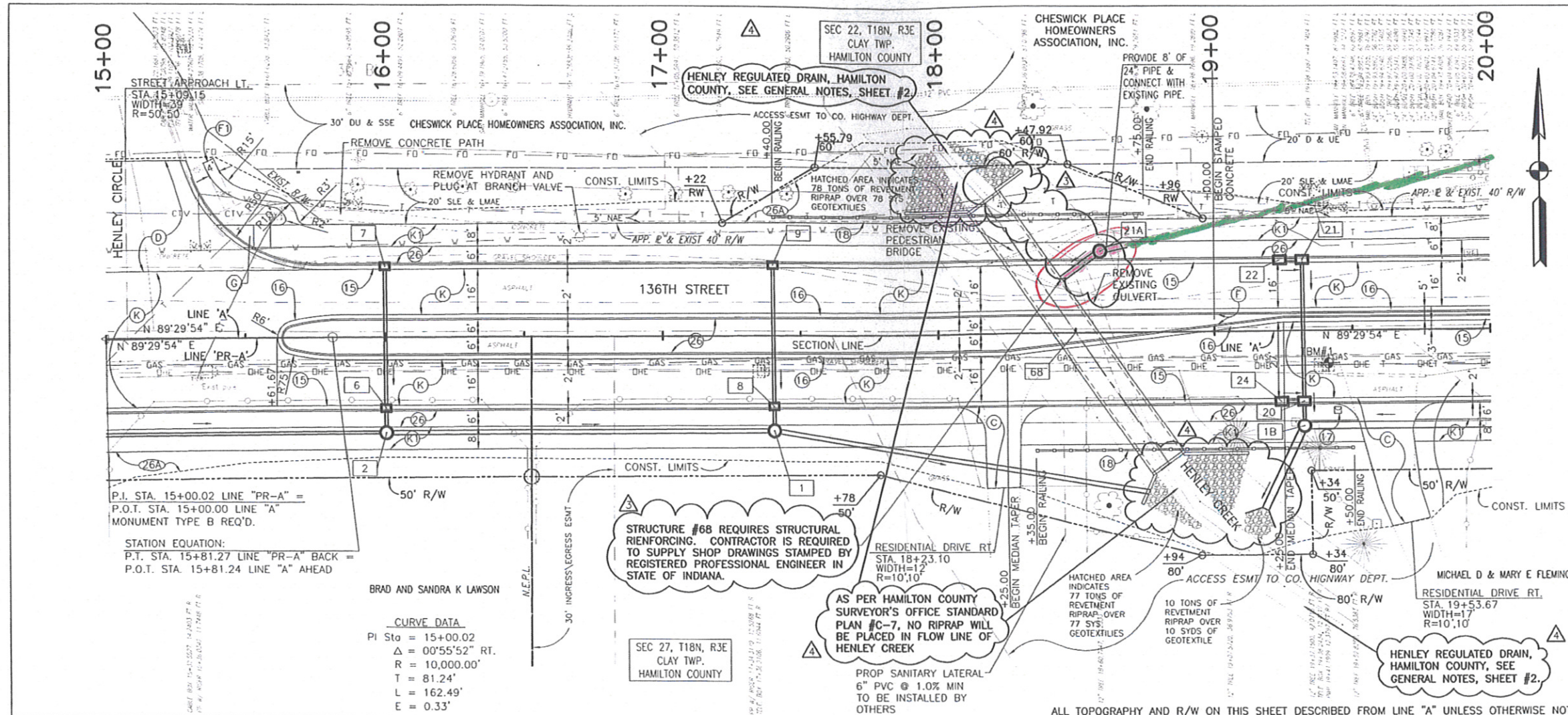
The city of Carmel widened 136th St. between Ditch and Springmill Roads. (See plans by DLZ with Project #04-07). The project removed STR. 800 on the existing 24" RCP outletting into Williams Creek. A new inlet was set (STR 21A) and the pipe was extended to the Box culvert under 136th St (STR 68). Thus 17' of 24" RCP was added at this location. It should also be noted that Existing Structure 803 was brought to grade and replaced with new Structure 55A. The 6" SSD under the curb at the entrance of Cheswick BLVD was removed. Therefore, 292' feet of 6" SSD was removed. (See sheet 7,8 on the plans)


Suzanne L. Mills
GIS Specialist



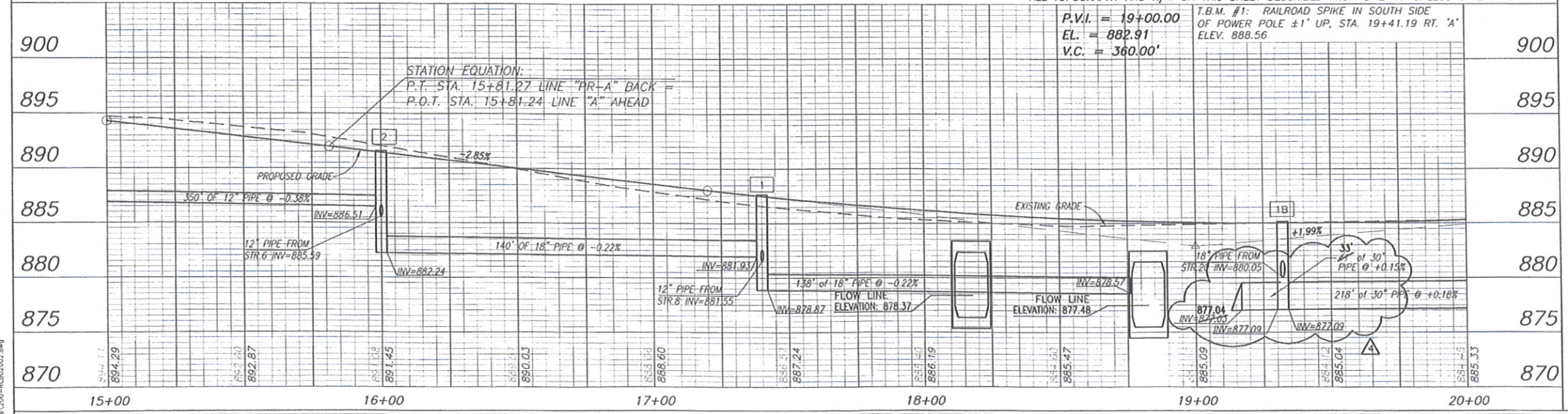
See Plans By: DLZ PRJ. 04-07; Sheets 7 & 8

001.004
Tract 6
sub_rg_dtm.dgn 3/14/2011 1:59:18 PM



- LEGEND**
- (15) COMBINED CONCRETE CURB AND GUTTER TYPE II
 - (16) COMBINED CONCRETE CURB AND GUTTER TYPE III
 - (17) MAILBOX ASSEMBLY
 - (18) ALUMINUM RAILING, SEE DETAIL SHEET #19
 - (26) SODDING, NURSERY
 - (26A) MULCHED SEEDING TYPE 'U' ON 4" TOPSOIL
 - (C) CEMENT CONCRETE PAVEMENT FOR DRIVEWAYS, ON 6" COMPACTED AGGREGATE, SIZE NO. 53
 - (D) HMA FOR APPROACHES TO BE: 165# HMA SURFACE, TYPE B ON 275# /SYD. HMA INTERMEDIATE, TYPE B ON 990# /SYD. HMA BASE, TYPE B
 - (F) 4" DECORATIVE COLORED CONCRETE ON 6" COMPACTED AGGREGATE, SIZE NO. 53
 - (K) MAINLINE PAVEMENT SECTION, SEE TYPICAL SECTION SHEET.
 - (K1) TRAIL PAVEMENT SECTION, SEE TYPICAL SECTION SHEET.
 - (-) CONCRETE CURB RAMP (LETTER INDICATES TYPE), COLORED CONCRETE
 - (F1) 4" CONCRETE SIDEWALK

- 1 17+40, 34" RT. STR. NO. 1
MANHOLE TYPE C-4 & 138" OF 18" PIPE REQ'D AND RCP END SECTION REQ'D
- 1B 19+32, 34" RT. STR. NO. 1B
MANHOLE TYPE J-4 & 48" OF 30" PIPE REQ'D AND RCP END SECTION
- 2 16+00, 34" RT. STR. NO. 2
MANHOLE TYPE C-4 & 140" OF 18" PIPE REQ'D
- 6 16+00, RT. STR. NO. 6
CATCH BASIN TYPE K-10 W/ CATCH BASIN HOOD & 9' OF 12" PIPE REQ'D
- 7 16+00, LT. STR. NO. 7
INLET TYPE J-10 & 50' OF 12" PIPE REQ'D
- 8 17+40, RT. STR. NO. 8
CATCH BASIN TYPE K-10 W/ CATCH BASIN HOOD & 9' OF 12" PIPE REQ'D
- 9 17+40, LT. STR. NO. 9
INLET TYPE J-10 & 50' OF 12" PIPE REQ'D
- 20 19+32, RT. STR. NO. 20
CATCH BASIN TYPE MOD C-15 W/ CATCH BASIN HOOD & 9' OF 18" PIPE REQ'D
- 21 19+32, LT. STR. NO. 21
INLET TYPE C-15 & 48" OF 12" PIPE REQ'D
- 22 19+24, LT. STR. NO. 22
INLET TYPE B-15 & 8' OF 12" PIPE REQ'D
- 24 19+24, RT. STR. NO. 24
INLET TYPE B-15 & 8' OF 12" PIPE REQ'D
- 68 18+50 STR. NO. 68
12' X 6' BOX CULVERT
- 21A 18+59, 28.8" LT. STR. NO. 21A
MANHOLE TYPE C-4 & 42" OF 24" PIPE REQ'D



PERMIT REVISIONS 7-10-07 JAR
 PERMIT REVISIONS 7-6-07 JAR
 ADDENDUM 1 2-16-07 JAR

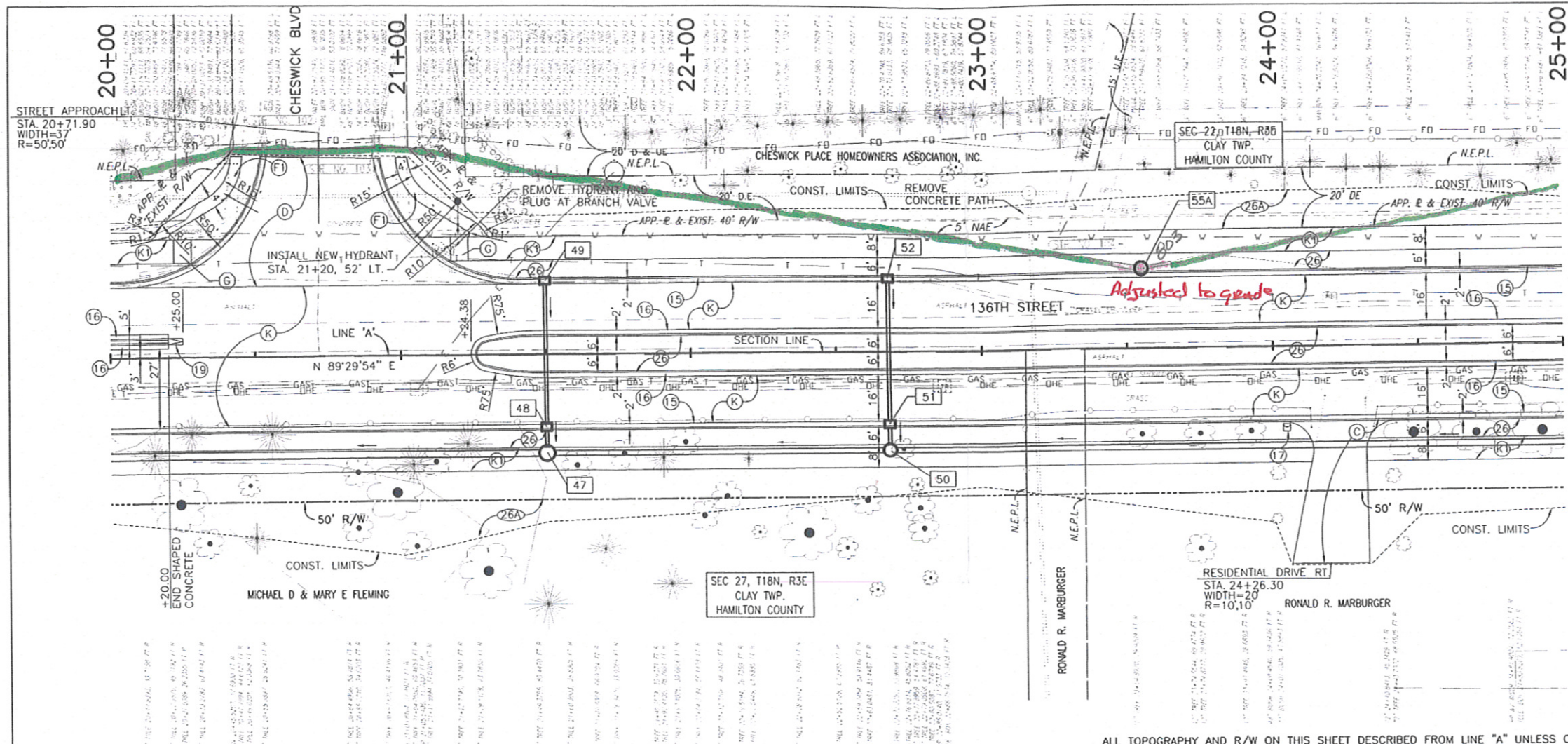
DLZ

JERRY A. RICHARDSON
REGISTERED PROFESSIONAL ENGINEER
STATE OF INDIANA
No. 10300110
DLZ INDIANA, LLC

RECOMMENDED FOR APPROVAL
 DESIGN/ENGINEER
 DATE: 7-10-07
 DESIGNED: FS DRAWN: JJC
 CHECKED: JAR CHECKED: FS

CITY OF CARMEL
136th STREET
PLAN AND PROFILE SHEET
LINES 'A' AND 'PR-A' STA. 15+00 TO 20+00

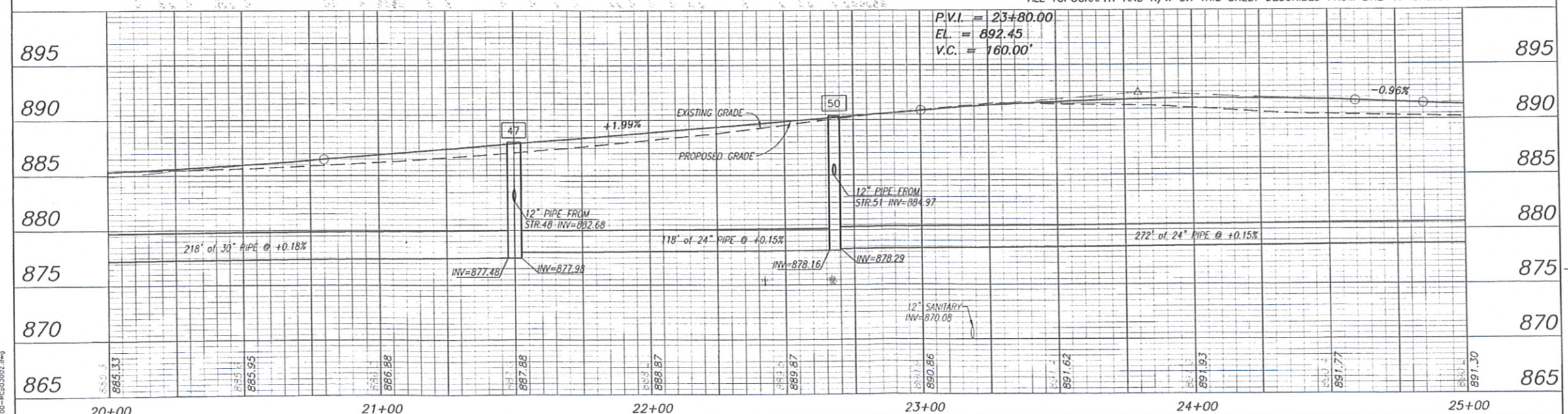
HORIZONTAL SCALE 1"=20'	ROAD FILE
VERTICAL SCALE 1"=5'	DESIGNATION
SURVEY BOOK	SHEETS 7 of 76
CONTRACT	PROJECT 04-07



- LEGEND**
- (15) COMBINED CONCRETE CURB AND GUTTER TYPE II
 - (16) COMBINED CONCRETE CURB AND GUTTER TYPE III
 - (17) MAILBOX ASSEMBLY
 - (19) CONCRETE CENTER CURB TYPE D
 - (26) SODDING, NURSERY
 - (26A) MULCHED SEEDING TYPE 'U' ON 4" TOPSOIL
 - (C) CEMENT CONCRETE PAVEMENT FOR DRIVEWAYS, ON 6" COMPACTED AGGREGATE, SIZE NO. 53
 - (K) MAINLINE PAVEMENT SECTION, SEE TYPICAL SECTION SHEET.
 - (KI) TRAIL PAVEMENT SECTION, SEE TYPICAL SECTION SHEET.
 - (-) CONCRETE CURB RAMP (LETTER INDICATES TYPE), COLORED CONCRETE
 - (F) 4" CONCRETE SIDEWALK

- (47) 21+50.34 RT. STR. NO. 47
MANHOLE TYPE C-4 & 218" OF 24" PIPE REQ'D
- (48) 21+50 RT. STR. NO. 48
CATCH BASIN TYPE K-10 W/ CATCH BASIN HOOD & 9' OF 12" PIPE REQ'D
- (49) 21+50 LT. STR. NO. 49
INLET TYPE J-10 & 50' OF 12" PIPE REQ'D
- (50) 22+68.34 RT. STR. NO. 50
MANHOLE TYPE C-4 & 118" OF 24" PIPE REQ'D
- (51) 22+68 RT. STR. NO. 51
CATCH BASIN TYPE K-10 W/ CATCH BASIN HOOD & 9' OF 12" PIPE REQ'D
- (52) 22+68 LT. STR. NO. 52
INLET TYPE J-10 & 50' OF 12" PIPE REQ'D
- (55A) 23+55.34 27.2' LT. STR. NO. 55A
MANHOLE TYPE C-4 & 8' OF 12" PIPE REQ'D. & 8' OF 18" PIPE

ALL TOPOGRAPHY AND R/W ON THIS SHEET DESCRIBED FROM LINE "A" UNLESS OTHERWISE NOTED.



- EXISTING STRUCTURES**
- (1) NO CHANGE REQUIRED
 - (2) NO CHANGE REQUIRED
 - (3) REMOVE EXISTING INLET

HORIZONTAL SCALE 1"=20'	ROAD FILE
VERTICAL SCALE 1"=5'	DESIGNATION
SURVEY BOOK	SHEETS 8 of 76
CONTRACT	PROJECT 04-07

File: 01_2007_10.57.mxd User: dlz
 Path: M:\Users\dlz\Projects\2007-04-03\136th Street\136th Street.dwg

DLZ

LEROY A. RICHMOND
REGISTERED PROFESSIONAL ENGINEER
No. 10300110
STATE OF INDIANA
DLZ INDIANA, LLC

RECOMMENDED FOR APPROVAL: *Jeremy P. Richardson* 2-2-07
DESIGN ENGINEER DATE

DESIGNED: FS DRAWN: JJC
CHECKED: JAR CHECKED: FS

CITY OF CARMEL
136th STREET

PLAN AND PROFILE SHEET
LINE 'A' STA. 20+00 TO 25+00